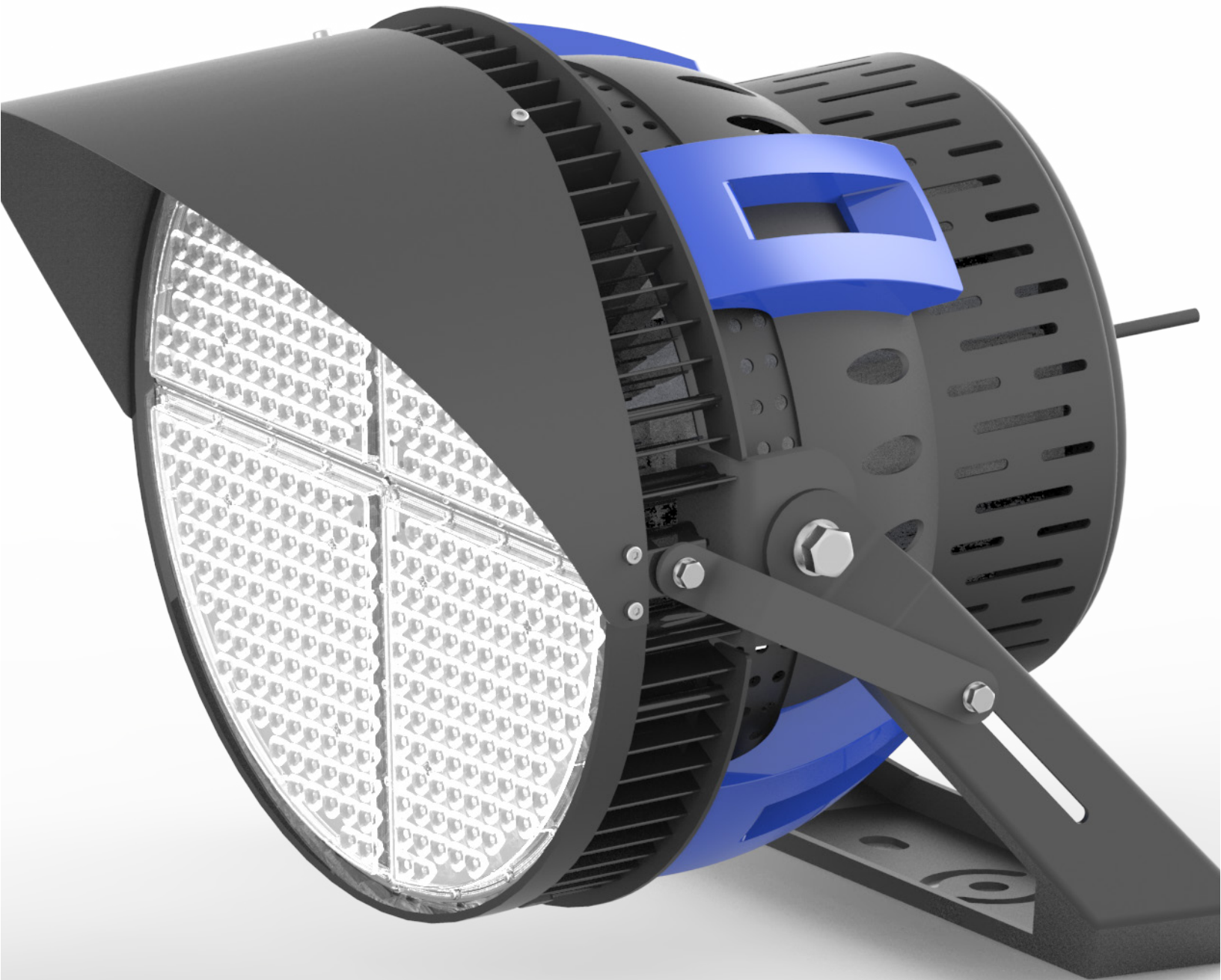


TECHNICAL DATA



SYSTEM SPECIFICATIONS

High Performance Sports Lighting System

System Watts: 1,000W

Housing Material: Aluminum, Powder Coated

L70 Hours: >60,000

Lumen Output: 120,000

CCT: 4000K/5700K/6500K

CRI: >90Ra

Input Voltage: 240-480V

Power Factor: 0.95

THD: <15%

Input Protection: 10KV Current Surge

Driver: Integral / Remote

Operating Temp Range: -40°C to +55°C

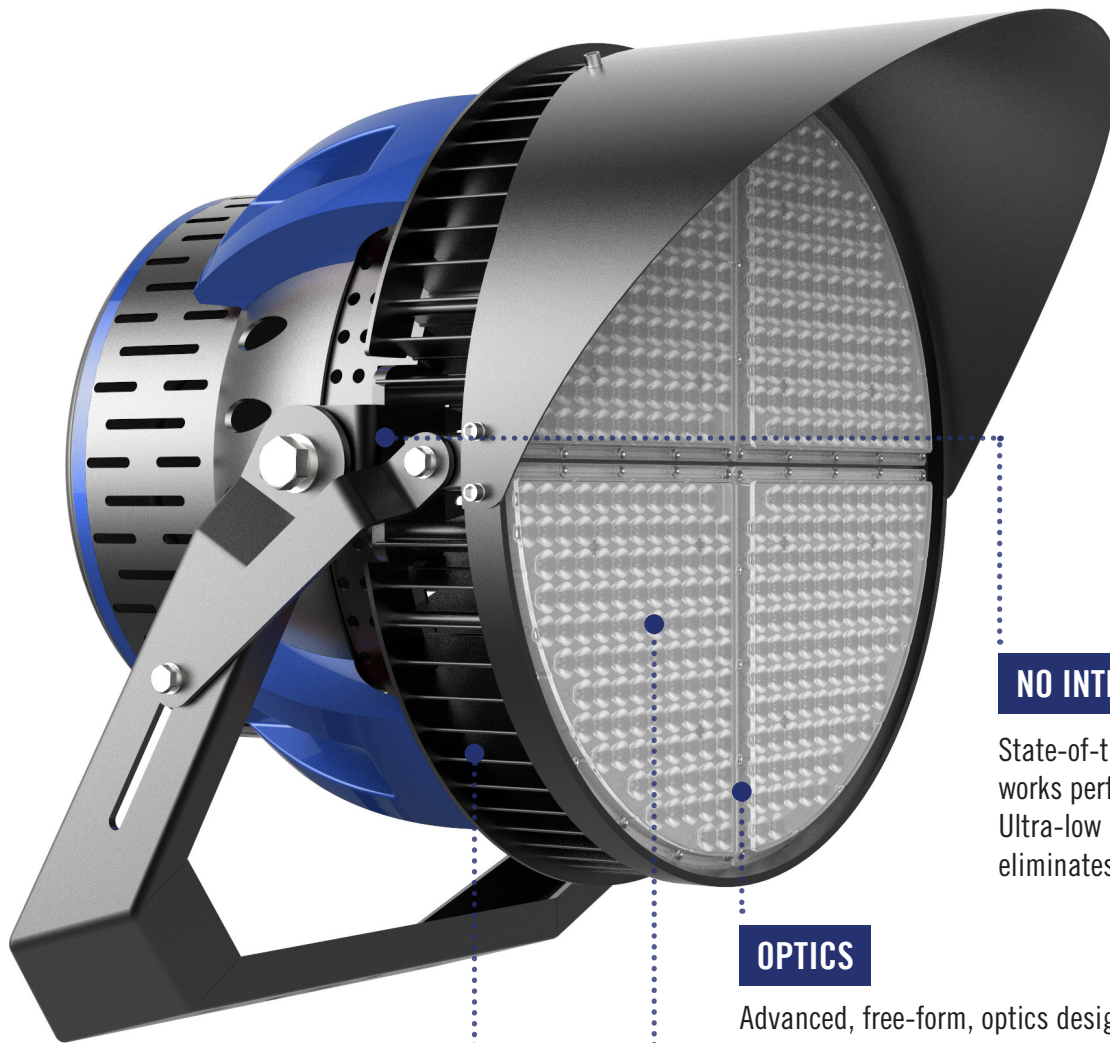
IP Rating: IP66

Weight of Fixture: 43lbs

EPA: 2.5



TECHNOLOGY CHANGES PERFORMANCE



NO INTERFERENCE

State-of-the art circuit system which works perfectly with other systems. Ultra-low EMI noise generation eliminates electrical interference.

OPTICS

Advanced, free-form, optics designed with unique "multi-scale lenses" to create uniform light distribution and glare-reduction.

SOLID STATE DESIGN

Unique "SSD" design, simple, and advanced.

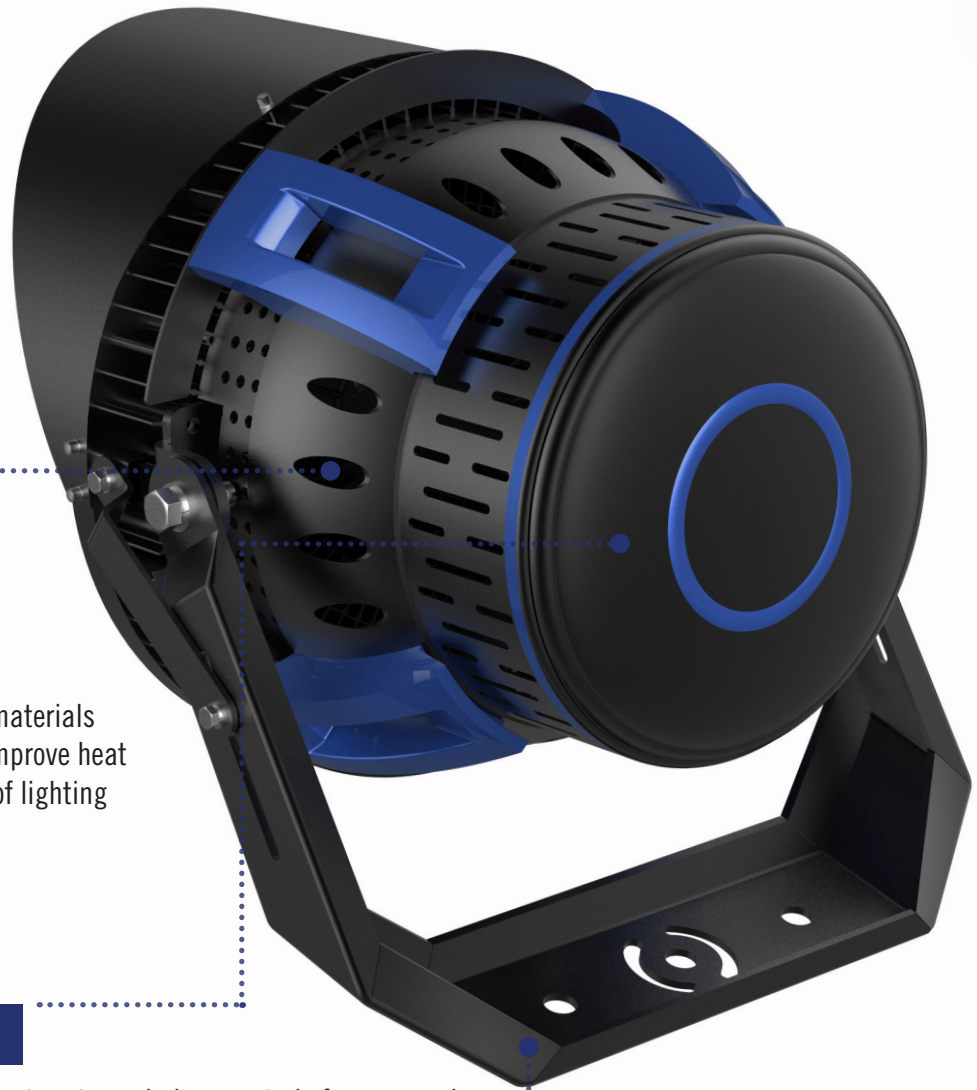
Ensures durability of LED chip.

All parts are individual, rugged, and strong.

ENERGY EFFICIENCY

Our photoelectric conversion is the most efficient method to save energy and produce more light.

INNOVATION LIGHTS UP THE FUTURE



THERMAL MANAGEMENT

Seamless link between aerometal materials and numerous heat sink vents to improve heat management and ensure stability of lighting system.

CONTROL SYSTEM

Digital Contactor™ smart system wireless controls for zone and scheduling can be integrated into each system. Wireless digital or mechanical contactor compatible.

EASE OF INSTALLATION

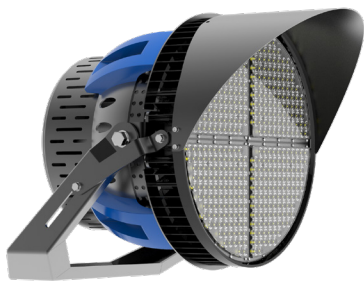
Adjustable beam angle up to 240°.

Simple bolt on mounting template.

DIGITAL CONTACTOR™ WIRELESS CONTROLS



CELL OR LAN NETWORK

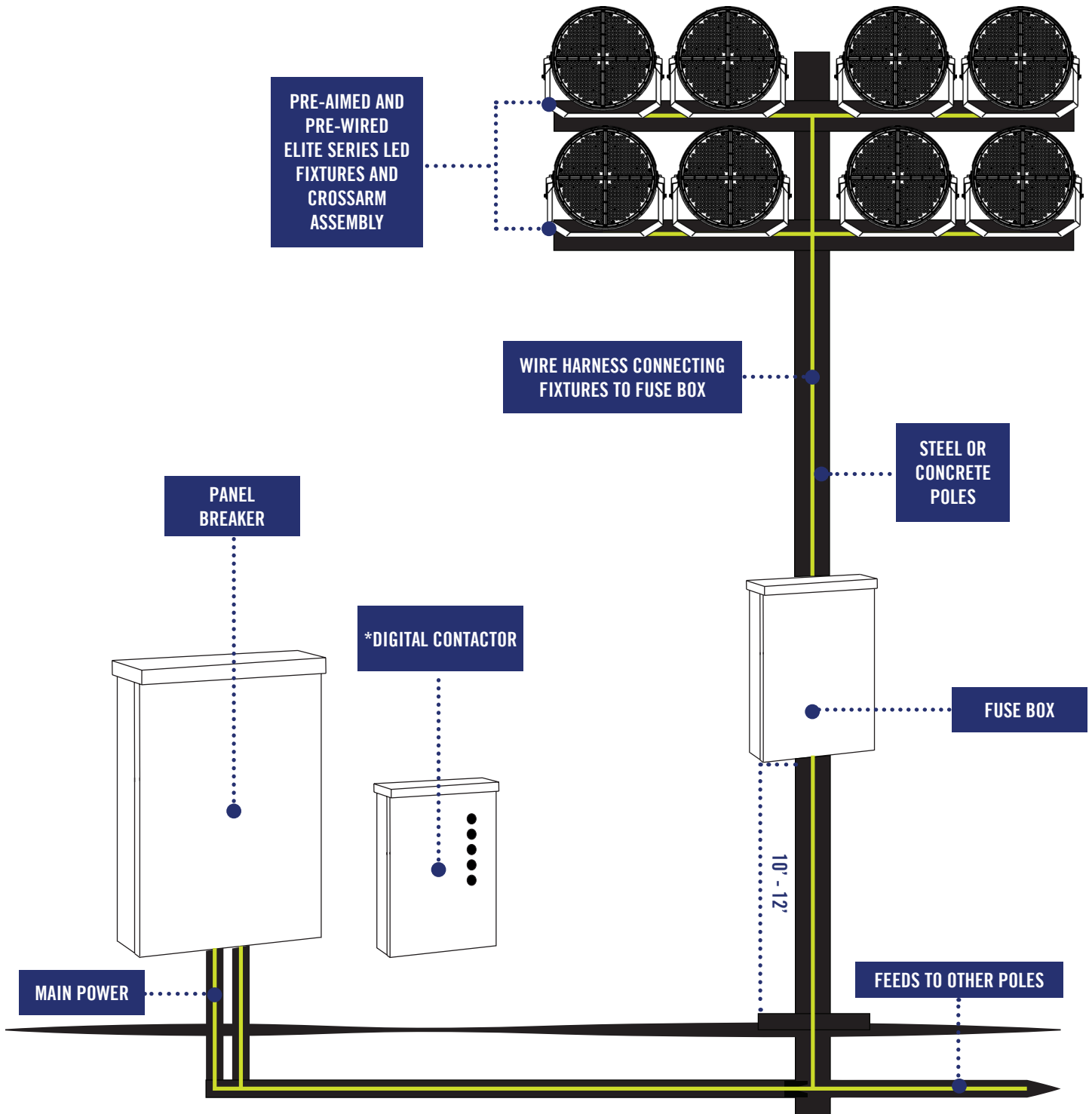


GEOSPORT™ LIGHTING DIGITAL CONTACTOR™



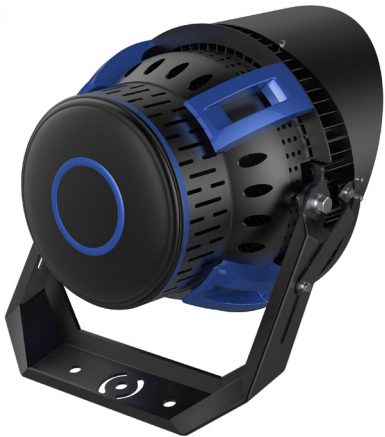
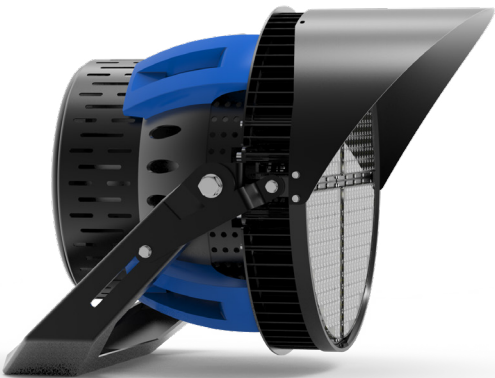
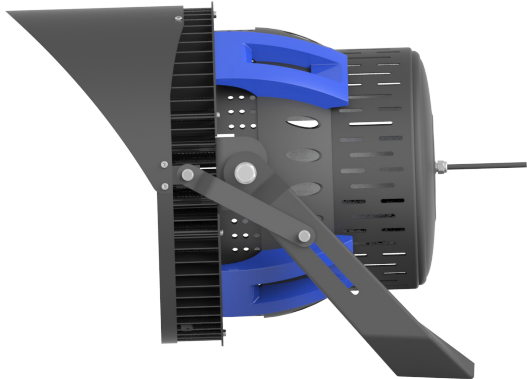
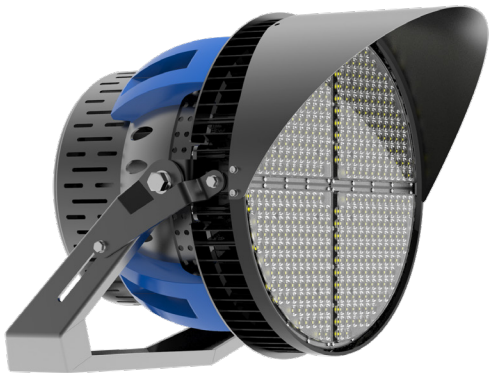
WIFI NETWORK

SIMPLE SYSTEM DRAWING



THIS IS A VISUAL REPRESENTATION NOT DRAWN TO SCALE | *DIGITAL CONTACTOR™ IS OPTIONAL

ELITE SERIES DESIGN





WWW.GEOSPORTLIGHTING.COM | 1-877-730-4762

